

Friends of the Pecatonica River Foundation

THE CURRENT

January 2024



The new year begins with promise and possibilities. We are making plans for our organization to improve paddling opportunities and the watershed. This picture is from my archive of paddling on the Pecatonica River. The McConnell and Damascus launches are sites that make us proud. Wes Block was the missing link that made Tutty's Crossing a "destination" on the water Trail. Years of planning and hard work have gotten us this far, and more lies ahead. Our focus will return to Atten's Landing this year, and we may consider improvements at Paco and Laoes Bistro and explore adding a launch between that site and Atten's.

We plan to travel from Brewsters Landing to Pecatonica and assess the condition of the Pecatonica River regarding obstruction to boating traffic. They will be a "first" for us. We have gone from Tutty's to McConnell and Pecatonica to Atten's Landing. It will take several trips to accomplish. Please let me know if anyone has expertise that will help us with this project.

Someone suggested a launch site between "Paco and Laoes" and Atten's Landing. We considered the Ridott area as a launch site in our early planning. Stephenson County owns the land on the north side of the bridge, but it floods. More thought is required. Happy New Year!

Joe Ginger, president

MEETINGS & EVENTS

Everyone is invited. Bring your ideas!

Jan. 11	RAFTERS 6:30 P.M.
Feb. 8	Next meeting.
Mar. 8	FPRF meetings are the second Thursday of the month. See "ALL IN. Stephenson County" for area events.
	https://www.eventbrite.com/d/il-freeport/events/

Other Events & Activities

Freeport/Stephenson County

<https://greaterfreeport.com>



Watch Tom Lindblade's "Illinois' Friendliest Paddle"
<http://bit.ly/paddlethepec>



Freeport Park District
1122 S. Burchard Ave.
Freeport, IL 61032
1-815-235-6114
www.freeportparkdistrict.org

Lena Community Park District
609 N. Schuler St.
Lena, IL 61048
1-815-369-5351
www.lenaparks.org



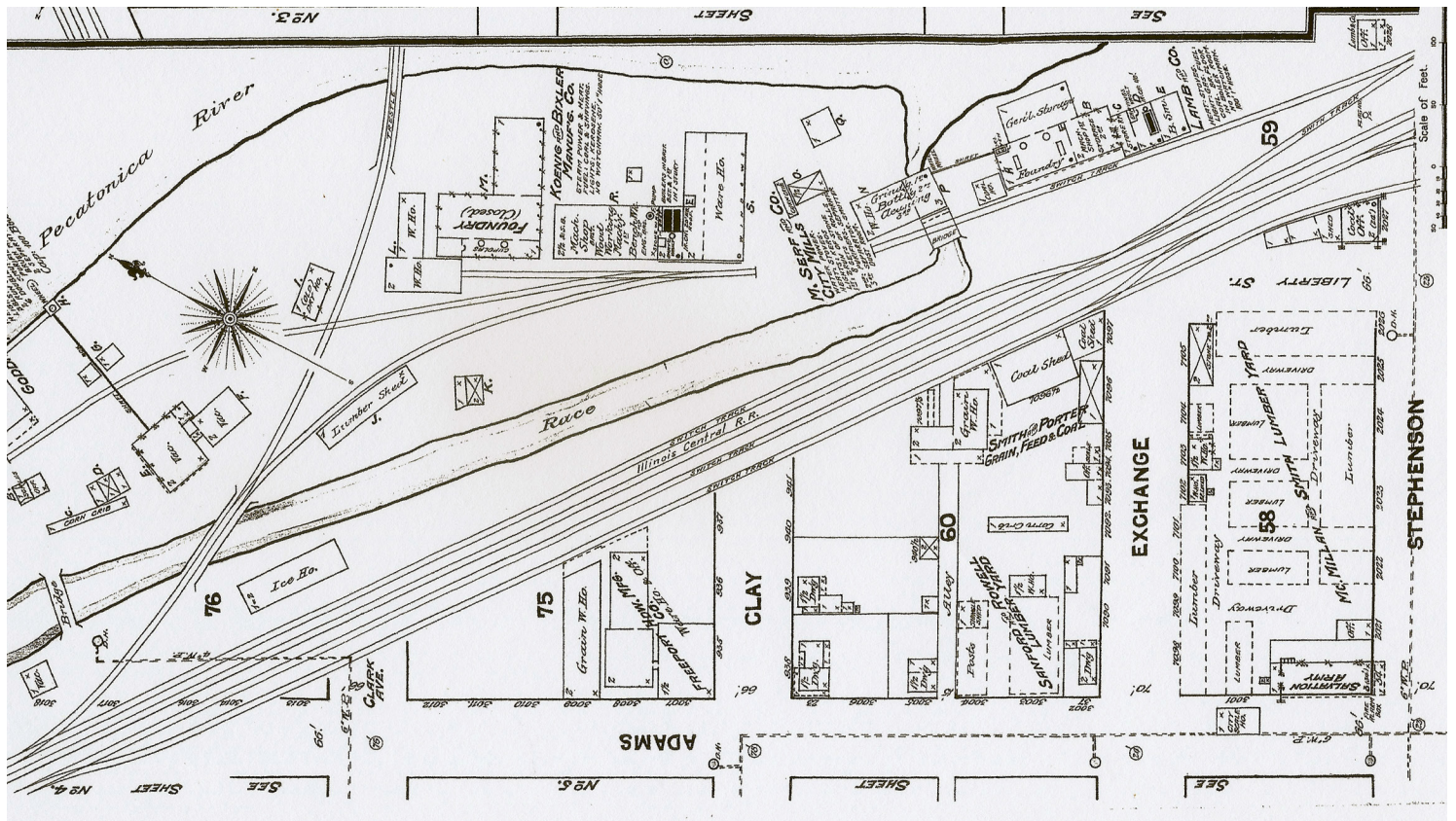
Pecatonica River Scenes in Postcard - Book 2

Pecatonica River Scenes in Postcards \$12 +\$3 S&H
www.pecriver.org/projects

"Pecatonica River Scenes in Postcard - Book 2" \$12 + \$3 S&H

Available at: Convention & Visitors Bureau, 9 East and through the mail.

A limited number of "Pecatonica River Scenes in Postcard" are available at \$12 + \$3 S&H.



From the archives, we have another old map. It shows the Pecatonica River. On the extreme right is Stephenson St. The Pecatonica River runs across the top of the map—the stream on the left forms Manufacturers Island. Lamb and Co. occupies what would become Burgess Battery. It would appear that the train track that crosses the river is the walking bridge at Tutty's Crossing. On the left edge of the map is the Goddard & Clark Roller Mill. It is likely the main reason for building the dam. The map is from the 1890 Sanborn map of Freeport. By 1904 the millrace was gone. The mill site became a source of electricity for the Interurban rail system.

If you are interested in improving river stewardship, promoting paddling, organizing river events, the history of the Pecatonica River and communities along the river, check our website and contact us.

Friends of the Pecatonica River Foundation

50 W. Douglas St. Suite 1002

Freeport, IL 61032

1-815-353-2852

www.pecriver.org

www.illinoispadding.org

email: pecriver@pecriver.org

*We will not share or sell your email address.

Joe Ginger – President

Mickie Dittmar – Vice President

Lee Butler -- Secretary /Treasurer

Roger Schamberger – Governmental Liaison

Mickie Dittmar & John Fritz – Fundraising Chairs

Joe Green – Site Development Manager

Betty Butler -Membership Jim Leamy - Safety Chair

Friends of the Pecatonica River Foundation is a 501(c)(3) organization.

Dues are due in February. If you joined in July or later, you are good for 2024.

All donations are tax deductible and should be made payable to:

Friends of the Pecatonica River Foundation.

